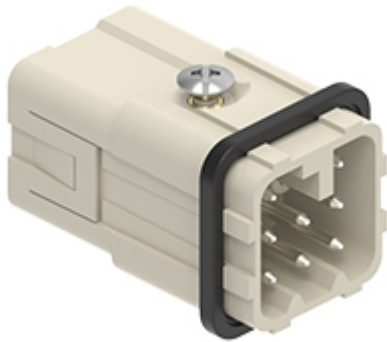


Part number

CDYM 08



Male insert, CDY series, AXYR® spring push-in terminal connection without tools, 8 poles, 10 A 50 V 0,8 kV 3, size "21.21"

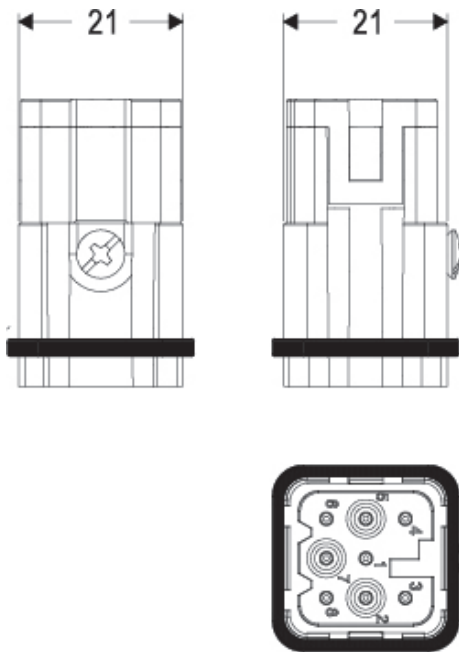
Product description		Material properties	
Product type	Insert	Main material	Polycarbonate (PC)
Series	CDY	Other materials	Contacts: copper alloy
Connection type	AXYR® high density spring terminal connection without tools	Colour	RAL 7032 grey
Gender	Male	RoHs conformity	Compliant with exemption 6(c): copper alloy containing up to 4% lead by weight
N. of poles	8 poles	China RoHs - EFUP	50
Size	Size "21.21"	REACH SVHC substances	Yes Lead
Technical data		General ordering information	
Current	10 A	EAN13 code	8015747292931
Rated impulse withstand voltage	0,8 kV	eCl@ss 8.1	27440205
Pollution degree	3	ETIM 7.0	EC000438
Rated voltage according to UL/CSA	50 V AC/120 V DC	Packaging Information	
Contact type	Turned silver plated	Packaging length	280,00 mm
IP degree of protection	IP20 without enclosure, IP44/IP66/IP67/IP68/IP69 with enclosure	Packaging height	170,00 mm
Further technical details		Packaging width	185,00 mm
Characteristics according to EN 61984	10A 50V ac / 120 dc 0,8kV 3	Packaging weight	2,03 kg
Mating cycles	≥ 500	Packaging volume	8,81 dm ³
Insulation resistance	≥ 10 GΩ	Packaging description	Carton box
Contact resistance	≤ 3 mΩ	Packaging quantity	100 Pcs
Weight	16,50 g	Packaging EAN code	8015747292948
Operating temperature range (min, max)	-40 °C ... +125 °C	Sub-packaging weight	0,02 kg
Conductors stripping length	9...11 mm	Sub-packaging description	Plastic bag
UL 94 flammability rating	V-0	Sub-packaging quantity	1 Pcs
		Sub-packaging EAN barcode	8015747292955

Part number

CDYM 08

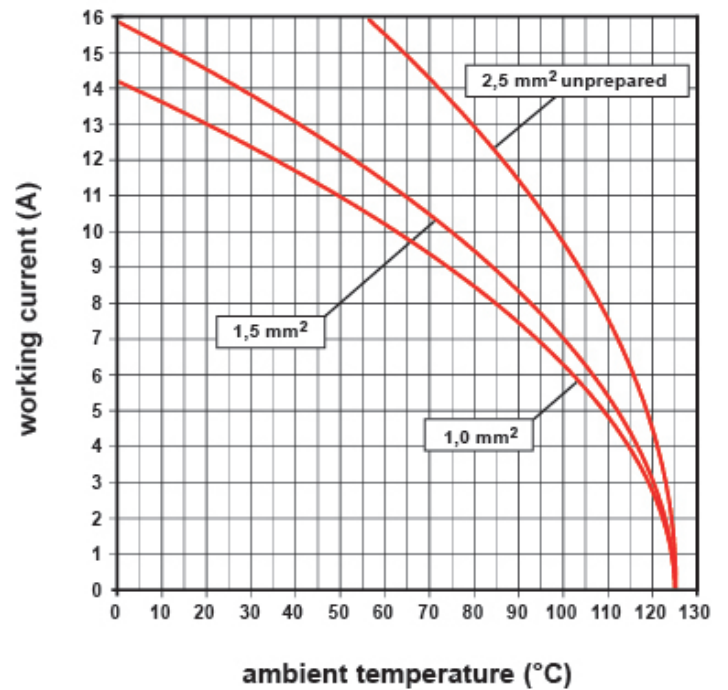


Catalogue drawings



Derating curves

CDY 08 poles connector inserts Maximum current load derating diagram



Notes

Dimensions shown in mm are not binding and may be changed without notice.

inserts for wires with the following cross-sectional areas:

0,14 - 2,5 mm² (26 - 14 AWG)

for prepared wires useable section:

0,14 - 1,5 mm² (26 - 16 AWG)