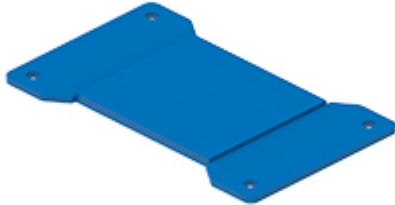


Part number

CR 10 GTPC



Gasket for surface mounting housings T-TYPE/H e T-TYPE/C series, for size "57.27"

Product description

Product type	Gasket
Specification	For surface mounting housings T-TYPE/H and T-TYPE/C series For size "57.27"

Further technical details

Weight	11,00 g
---------------	---------

Material properties

Main material	Silicone rubber
Colour	RAL 5015 blue
RoHs conformity	Compliant
China RoHs - EFUP	E
REACH SVHC substances	No

General ordering information

EAN13 code	8015747274708
eCl@ss 8.1	27449290
ETIM 7.0	EC002943

Packaging Information

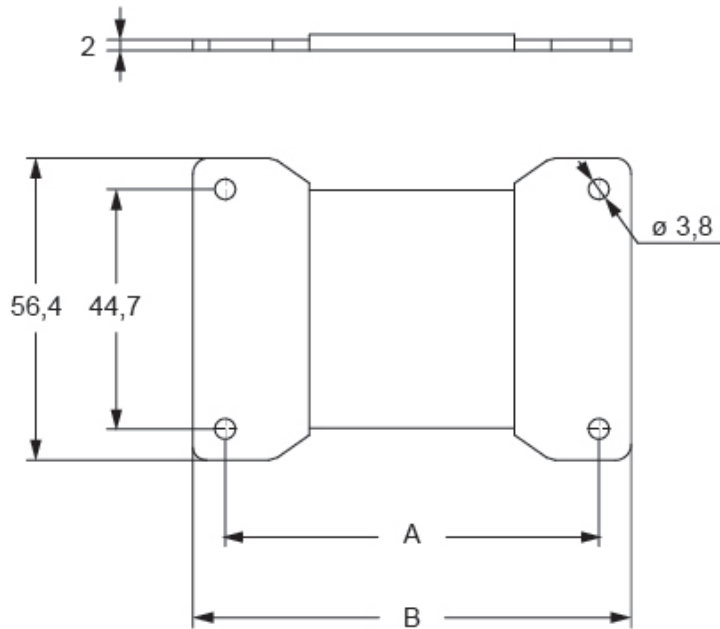
Sub-packaging weight	0,11 kg
Sub-packaging description	Plastic bag
Sub-packaging quantity	10 Pcs
Sub-packaging EAN barcode	8015747274845

Part number

CR 10 GTPC



Catalogue drawings



part No.	polarity	A	B
CR 06 GTPC	06	69,7	81,7
CR 10 GTPC	10	81,7	93,9
CR 16 GTPC	16	104,7	116,7
CR 24 GTPC	24	131,7	143,6

Notes

Dimensions shown in mm are not binding and may be changed without notice.