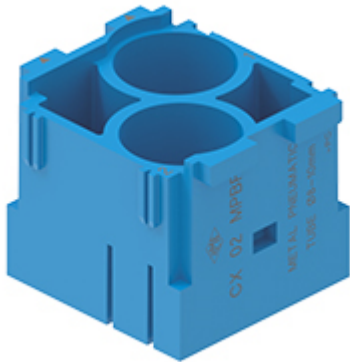


Part number

CX 02 MPBF



Female modular insert, Mixo series, for pneumatic contacts, 2 modules, with 2 seats for tube diameter 8,0-10 mm

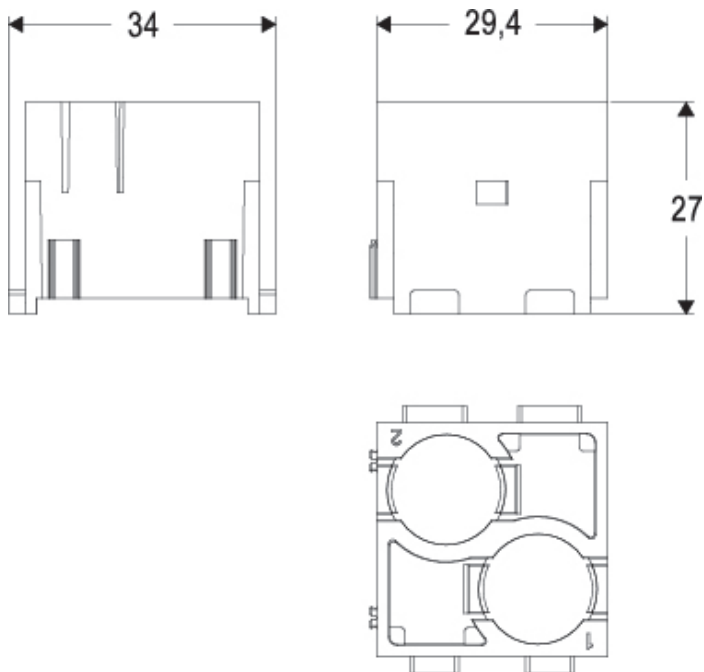
Product description		Material properties	
Product type	Modular insert	Main material	Polycarbonate (PC)
Series	Mixo	Colour	RAL 5015 blue
Connection type	Pneumatic	RoHs conformity	Compliant
Gender		China RoHs - EFUP	E
N. of poles	2 poles	REACH SVHC substances	No
Size	2 modules	General ordering information	
Specification	With 2 seats for tube diameter 8,0-10 mm	EAN13 code	8015747193320
Further technical details		eCl@ss 8.1	27440205
Mating cycles	≥ 500 ≥ 10.000 (HNM MIXO frames and enclosures)	ETIM 7.0	EC000438
Insulation resistance	≥ 10 GΩ	Packaging Information	
Weight	9,00 g	Packaging length	350,00 mm
Operating temperature range (min, max)	-40°C ... +80°C	Packaging height	105,00 mm
UL 94 flammability rating	V-0	Packaging width	145,00 mm
		Packaging weight	0,84 kg
		Packaging volume	5,33 dm ³
		Packaging description	Carton box
		Packaging quantity	60 Pcs
		Packaging EAN code	8015747193344
		Sub-packaging length	35,00 mm
		Sub-packaging height	40,00 mm
		Sub-packaging width	155,00 mm
		Sub-packaging weight	0,07 kg
		Sub-packaging volume	0,22 dm ³
		Sub-packaging description	Carton tray
		Sub-packaging quantity	5 Pcs
		Sub-packaging EAN barcode	8015747193368

Part number

CX 02 MPBF



Catalogue drawings



Notes

Warnings:

1) CRM/F CX code pins and guides must be used for pneumatic contacts modules. These pins also provide coding if pneumatic contacts modules are used exclusively.

Use of units for pneumatic contacts

- pneumatic contacts for pressure values up to 10 bar, for use with clean and dry compressed air
- possibility of using tubes with different diameters in the same modular unit
- female contacts with or without closing valve
- working temperature range - 40 °C ÷ + 80 °C
- use of tubes with Ø 8.0 and/or 10 mm, and possible replacement of tubes with assembled units. Tube with

- ID inner Ø (push-over attachment of tubes over barbed straight contacts):

CX xx MPF/M, CX xx MPV

- OD outer Ø (push-in attachment of tubes to the quick-fitting contacts):

CX xx MPQF/M, CX xx MPAV, CX xx MPAF/M, CX xx MPQV

Dimensions shown in mm are not binding and may be changed without notice.